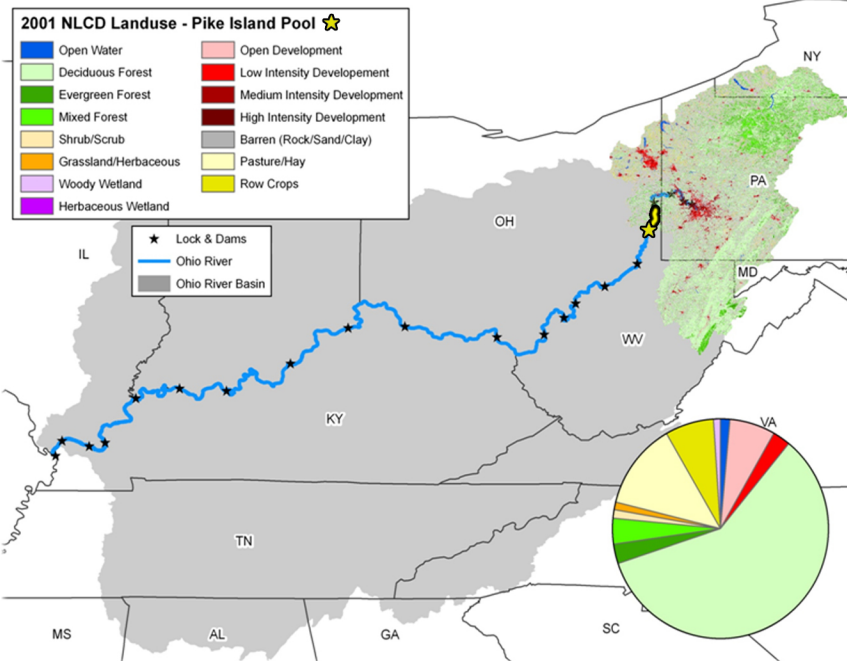


# Pike Island Pool - 2012

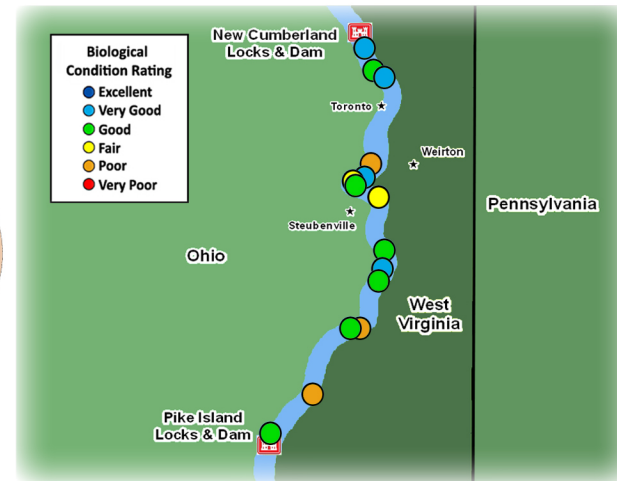
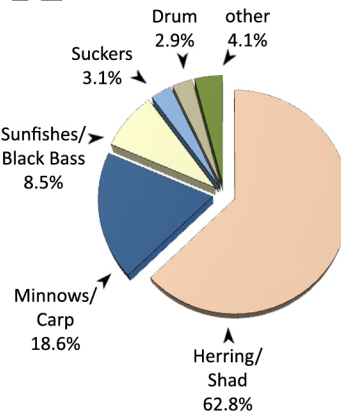
**Pike Island pool is 29.8 miles long, extending from New Cumberland Locks and Dam (ORM 54.4) to Pike Island Locks and Dam (ORM 84.2). The pool has a gradient drop of 0.4 feet per mile and averages 1,338 feet wide and 19 feet deep (ORSANCO 1994). The pool flows adjacent to the states of West Virginia and Ohio. This pool lies in a portion of the Ohio River heavily influenced by industry with a large amount of barge activity. The shorelines of this pool support a moderate degree of aquatic vegetation, and littoral zones were dominated by invasive species (*Hydrilla* spp.). The Pike Island pool receives water from the following tributaries: Buffalo Creek at mile point 74.7 with a drainage area of 160 square miles, and Short Creek at mile point 81.4 with a drainage area of 147 square miles. These watersheds are primarily forested (64.4%), but also have a considerable amount of row crops (7.2%) and pasture lands (12.5%).**



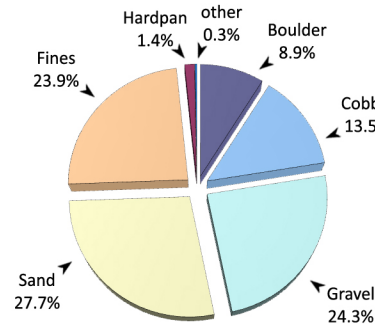
Land-use types within the Pike Island Pool watershed



northern pike (*Esox lucius*)



Locations of the 15 randomly chosen electrofishing sites in Pike Island Pool



bluegill (*Lepomis macrochirus*)

## Site Performance

Site No.	River Mile	Habitat Class	ORFIn Exp	ORFIn Obs	mORFIn Score
1	55.2	C	44.55	65.19	43.4
2	56.8	C	44.55	54.96	33.1
3	57.5	C	44.55	61.55	40.3
4	63.1	D	41.80	38.00	16.3
5	64.2	B	46.71	68.59	44.0
6	64.9	A	50.03	55.03	28.4
7	65.1	C	44.55	54.63	32.7
8	66.8	C	44.55	48.51	25.2
9	70.0	B	46.71	61.42	37.3
10	71.4	C	44.55	67.81	45.5
11	72.1	C	44.55	53.51	31.4
12	75.2	A	50.03	41.14	13.4
13	75.4	C	44.55	53.61	31.5
14	80.2	C	44.55	40.97	17.5
15	83.7	D	41.80	53.11	34.1

Average Pool mORFIn Score 31.6

## Pike Island Pool - Results Overview

### Sampling Results

#### Environmental Measures

Dominant Habitat Class: C - equal mix of coarse and fines  
Notable Measures: abundant aquatic vegetation (15 of 15 sites)

#### Biological Measures

Total No. of Fish Species: 42  
Average No. of Individuals: 137  
Dominant Family (*minus herring/shad*): Minnows/Carp  
Dominant Species (*minus shad/shiners*): smallmouth bass  
Species of Concern: river redhorse (OH)  
Rare Ohio River Mainstem Species: rainbow darter  
Notable Catch: northern pike

### Assessment Results

Highest scoring ORFIn metric (*minus DELTs*): % Non-natives  
Lowest scoring ORFIn metric: Great River Species  
Sites Above 25<sup>th</sup> percentile (i.e. mORFIn Score = 20): 12  
Sites Below 25<sup>th</sup> percentile (i.e. mORFIn Score = 20): 3  
Aquatic Life-Use Designation: Met

Overall Biological Condition Rating: Good