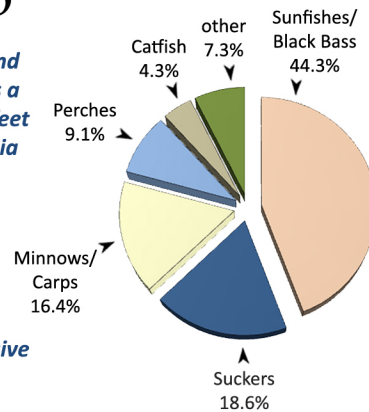
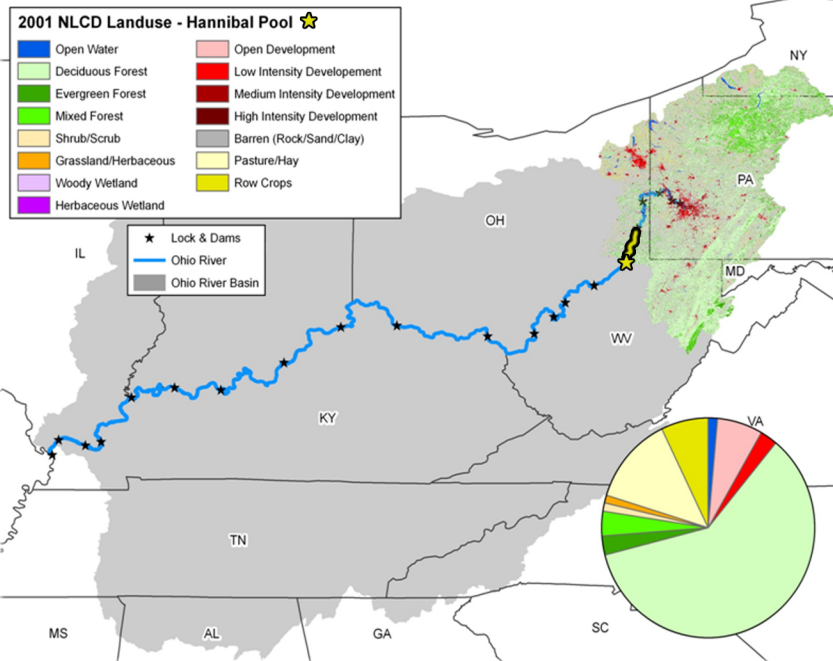
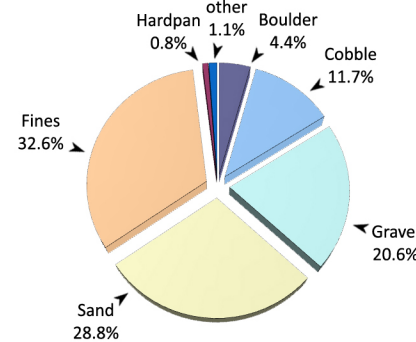


# Hannibal Pool - 2013

The Hannibal pool is 42.2 miles long, extending from Pike Island Locks and Dam (ORM 84.2) to Hannibal Locks and Dam (ORM 126.4). The pool has a gradient drop of 0.5 feet per mile and averages 1,133 feet wide and 21 feet deep (ORSANCO 1994). The pool is bordered by the states of West Virginia and Ohio and lies in a portion of the Ohio River heavily influenced by industry with a large amount of barge activity. The Hannibal pool directly receives water from numerous smaller tributaries draining approx. 1,120 square miles of the larger Ohio River basin: Wheeling Creeks (OH & WV), McMahon Creek, Grave Creek, Captina Creek, Fish Creek, and Sunfish Creek. Shorelines support a large amount of aquatic vegetation, and where observed, littoral zones were dominated by invasive species (*Hydrilla* spp.). The combined watershed is primarily forested (64.6%) and also contains pasture lands (12.7%) and row crops (7.0%).



Some sections of Hannibal Pool shorelines are entirely bedrock as seen here near Moundsville, WV



bluegill (*Lepomis macrochirus*)

## Site Performance

Site No.	River Mile	Habitat Class	ORFIn Exp	ORFIn Obs	mORFIn Score
1	84.9	C	44.55	63.82	42.2
2	86.7	C	44.55	64.61	42.9
3	88.6	C	44.55	65.68	43.8
4	94.3	C	44.55	66.27	44.3
5	96.5	C	44.55	64.66	42.9
6	99.5	B	46.71	52.33	26.7
7	103.2	C	44.55	42.50	18.6
8	105.3	B	46.71	51.08	25.2
9	107.7	C	44.55	41.65	18.0
10	109.7	C	44.55	49.90	27.0
11	111.1	B	46.71	69.50	44.8
12	111.9	B	46.71	61.25	37.1
13	116.5	D	41.80	58.35	40.4
14	118.6	C	44.55	46.35	22.4
15	122.2	E	39.59	59.24	40.1
Average Pool mORFIn Score					34.4

## Hannibal Pool - Results Overview

### Sampling Results

#### Environmental Measures

Dominant Habitat Class: C - equal mix of coarse and fines  
 Notable Measures: Above average flows and poor water clarity were observed during the sampling period

#### Biological Measures

Total No. of Fish Species: 48  
 Average No. of Individuals: 169  
 Dominant Family (*minus herring/shad*): Sunfishes/Black Bass  
 Dominant Species (*minus shad/shiners*): bluegill  
 Species of Concern (WV): highfin carpsucker  
 Rare Ohio River Mainstem Species: greenside darter  
 Notable Catch: river darter & channel darter (threatened in OH)

### Assessment Results

Highest scoring ORFIn metric (*minus DELTs*): % Non-natives  
 Lowest scoring ORFIn metric (*minus GR Species*): % Lithophils  
 Sites Above 25<sup>th</sup> percentile (i.e. mORFIn Score = 20): 13  
 Sites Below 25<sup>th</sup> percentile (i.e. mORFIn Score = 20): 2  
 Aquatic Life-Use Designation: Met

**Overall Biological Condition Rating: Good**



highfin carpsucker (*Carpiodes velifer*)