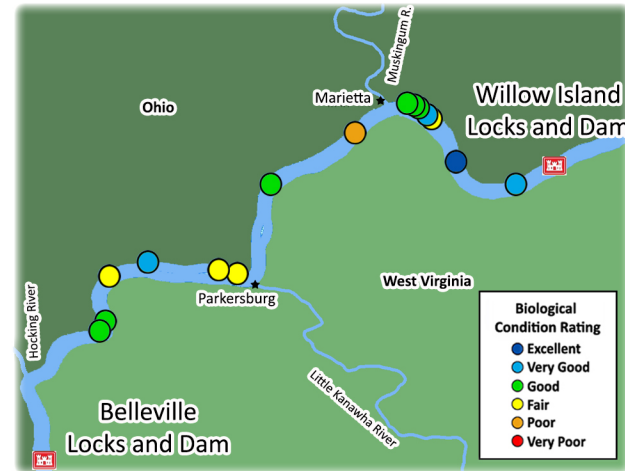
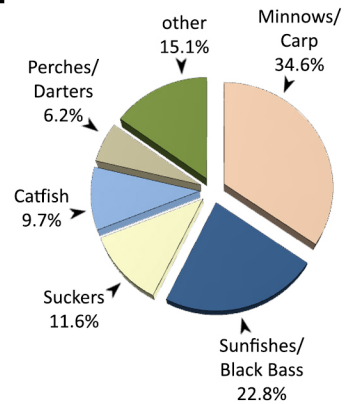


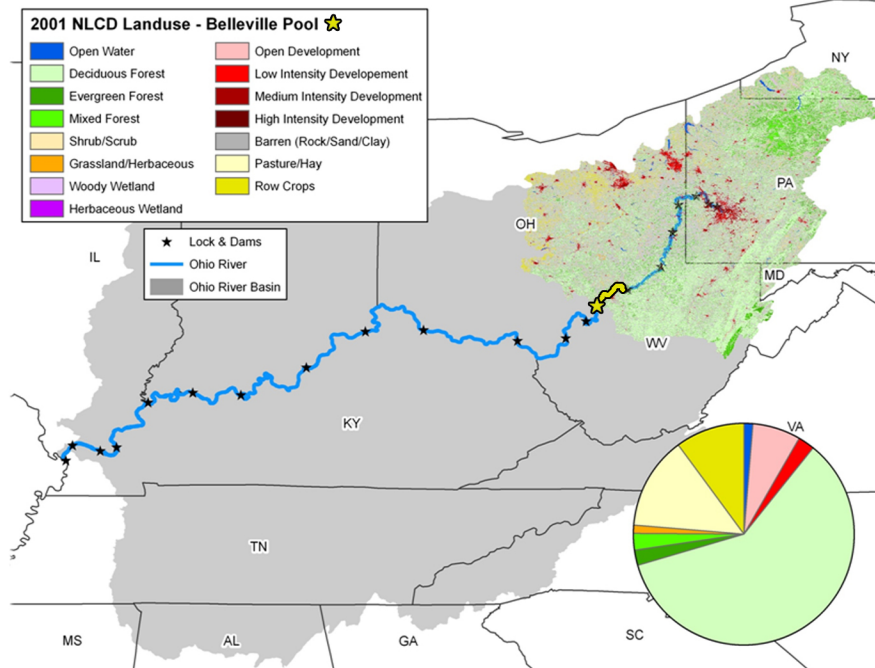
Belleville Pool - 2014

The Belleville pool is 42.2 miles long, extending from Willow Island Locks and Dam (ORM 161.7) to Belleville Locks and Dam (ORM 203.9). The pool has a gradient drop of 0.5 feet per mile and averages 1,327 feet wide and 24 feet deep (ORSANCO 1994). The pool is bordered by the states of West Virginia and Ohio and lies in a portion of the basin moderately influenced by industry and barge activity. The largest cities within in the pool are Marietta, OH (the oldest city in the state) and Parkersburg, WV. The Belleville pool receives water from three large tributaries, the Muskingum and Hocking rivers in Ohio and the Little Kanawha River in West Virginia. Combined, these tributaries drain 10,000 square miles. The pool has multiple islands scattered throughout its reach, enhancing habitat availability for aquatic species.

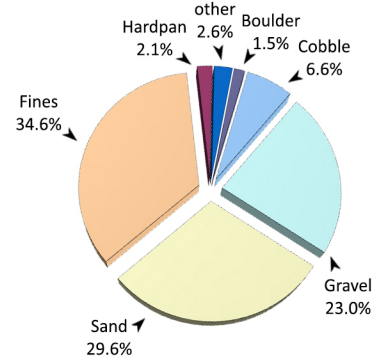


Locations of the 15 randomly chosen electrofishing sites in Belleville Pool

The mouth of the Muskingum River, the largest tributary of the Belleville Pool



Land-use types within the Belleville Pool watershed



Yellow Perch (*Perca flavescens*)

Site Performance

Site No.	River Mile	Habitat Class	ORFIn Exp	ORFIn Obs	mORFIn Score
1	170.1	C	44.55	55.14	33.3
2	172.1	C	44.55	56.43	34.7
3	173.8	D	41.80	48.69	28.7
4	175.5	C	44.55	57.83	36.3
5	176.6	B	46.71	38.64	10.9
6	180.3	C	44.55	51.90	29.6
7	181.3	D	41.80	41.90	20.1
8	184.5	D	41.80	53.52	34.7
9	190.6	C	44.55	37.43	15.1
10	192.1	D	41.80	46.11	25.4
11	192.1	B	46.71	61.74	37.7
12	197.9	D	41.80	18.04	0
13	199.5	D	41.80	45.43	24.6
14	199.7	A	50.03	41.36	13.5
15	199.9	E	39.59	42.38	22.6
Average Pool mORFIn Score					24.5

Belleville Pool - Results Overview

Sampling Results

Environmental Measures

Dominant Habitat Class: D-Shallow with sands and fines
Notable Measures: rocky shorelines were still to be found
woody debris and aquatic vegetation were both very common

Biological Measures

Total No. of Fish Species: 52
Average No. of Individuals: 146
Dominant Family (*minus herring/shad*): Minnows/Carp
Dominant Species (*minus shad/shiners*): Bluegill
Threatened/Endangered: Ohio Lamprey (E) & Channel Darter (T)
Rare Ohio River Mainstem Species: Trout-perch
Notable Catch: Goldfish

Assessment Results

Highest scoring ORFIn metric (*minus DELTs*): % Tolerant Species
Lowest scoring ORFIn metric: Great River Species
Sites Above 25th percentile (i.e. mORFIn Score = 20): 11
Sites Below 25th percentile (i.e. mORFIn Score = 20): 4
Aquatic Life-Use Designation: Met

Overall Biological Condition Rating: Fair



Channel Catfish (*Ictalurus punctatus*)