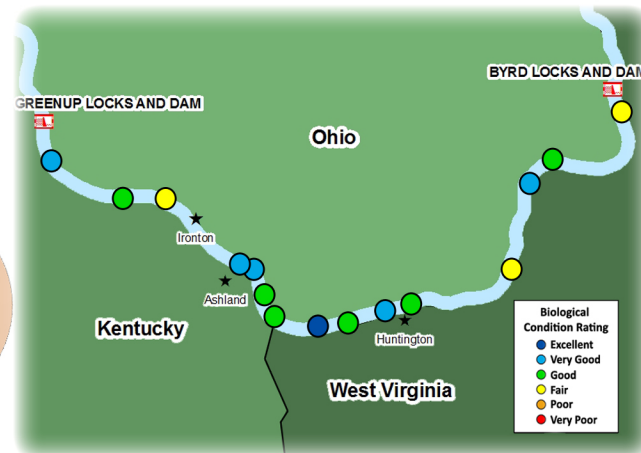
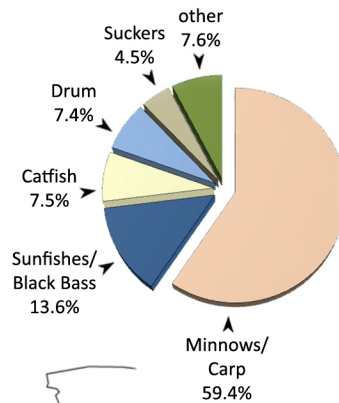
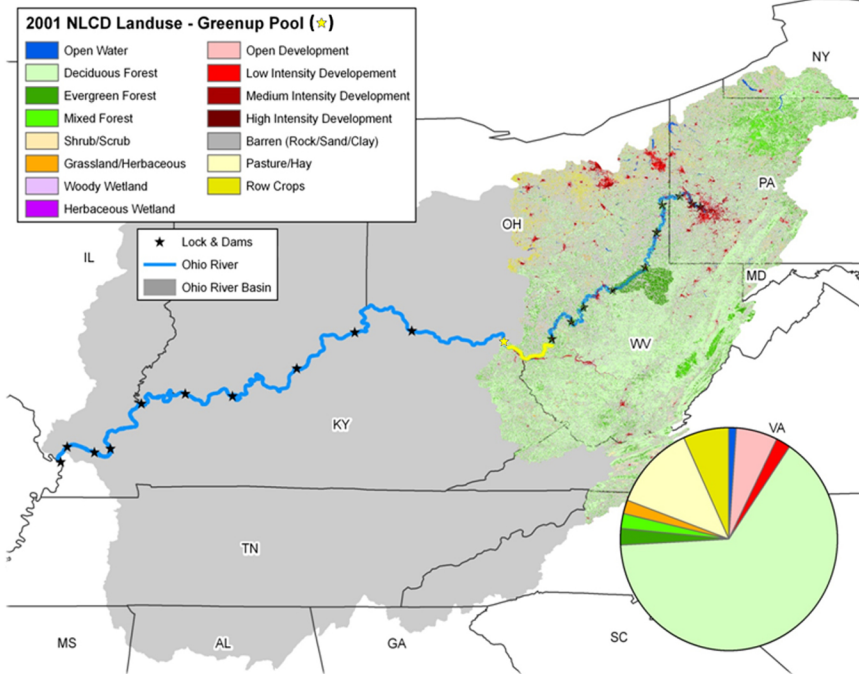
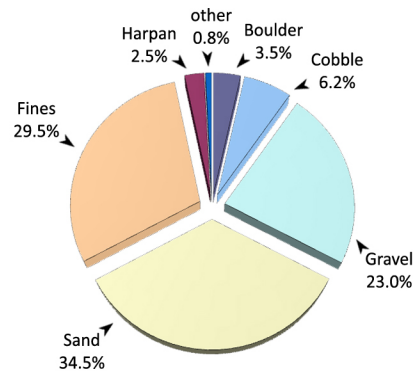


# Greenup Pool - 2011

The Greenup pool is 61.8 miles long, extending from Robert C. Byrd Locks and Dam (ORM 279.2) to Greenup Locks and Dam (ORM 341.0). The pool has a gradient drop of 0.4 feet per mile and averages 1,111 feet wide and 26 feet deep. The pool is bordered by the states of West Virginia and Ohio at the upper end and by Ohio and Kentucky downstream of the Big Sandy River. This pool is heavily influenced by industry with a large amount of barge activity near urban centers. The Greenup pool receives water from five major sub-basins: the Guyandotte, Big Sandy, and Little Sandy rivers and Twelvepole and Symmes creeks. These watersheds are primarily forested, but also have significant urban influences including the cities of Huntington, WV and Ashland, KY. Green Bottom Wildlife Management Area (WV) and the mouth of the Little Sandy (KY) provide great wetland and backwater habitat for rare mainstem species like the bowfin.



Locations of the 15 randomly chosen electrofishing sites in Greenup Pool



spotted bass (*Micropterus punctulatus*)

## Site Performance

Site No.	River Mile	Habitat Class	ORFin Exp	ORFin Obs	mORFin Score
1	283.0	C	44.55	49.85	26.90
2	288.2	C	44.55	57.21	35.59
3	292.4	C	44.55	63.53	41.98
4	299.3	C	44.55	48.37	24.98
5	307.3	D	41.80	50.98	31.55
6	309.1	D	41.80	60.01	41.97
7	311.6	C	44.55	60.81	39.63
8	313.6	D	41.80	73.01	55.26
9	316.8	D	41.80	53.63	34.78
10	318.9	C	44.55	54.73	32.81
11	321.1	B	46.71	74.49	48.98
12	322.0	C	44.55	72.81	49.69
13	329.2	E	39.59	47.69	27.41
14	331.8	D	41.80	56.03	37.72
15	337.6	E	39.59	60.29	41.37

Average Pool mORFin Score 38.0

## Greenup Pool - Results Overview

### Sampling Results

#### Environmental Measures

Dominant Habitat Class: C – equal mix of coarse and fines  
Notable Measures: relatively high percentage of barge traffic

#### Biological Measures

Total No. of Fish Species: 47  
Average No. of Individuals: 183  
Dominant Family (*minus herring/shad*): Minnows/Carp  
Dominant Species (*minus shad/shiners*): bluegill  
Species of Concern: river redhorse (OH), black buffalo (KY)  
Rare Ohio River Mainstem Species: bowfin  
Notable Catch: river redhorse, numerous catfish and basses

### Assessment Results

Highest scoring ORFin metric (*minus DELTs*): % Tolerants  
Lowest scoring ORFin metric: % Lithophils  
Sites Above 25<sup>th</sup> percentile (i.e. mORFin Score = 20): 15  
Sites Below 25<sup>th</sup> percentile (i.e. mORFin Score = 20): 0  
Aquatic Life-Use Designation: Met

Overall Biological Condition Rating: Good

Sunset over the bridges connecting two of the larger cities in Greenup Pool, Ashland (KY) and Ironton (OH)



bowfin (*Amia calva*)