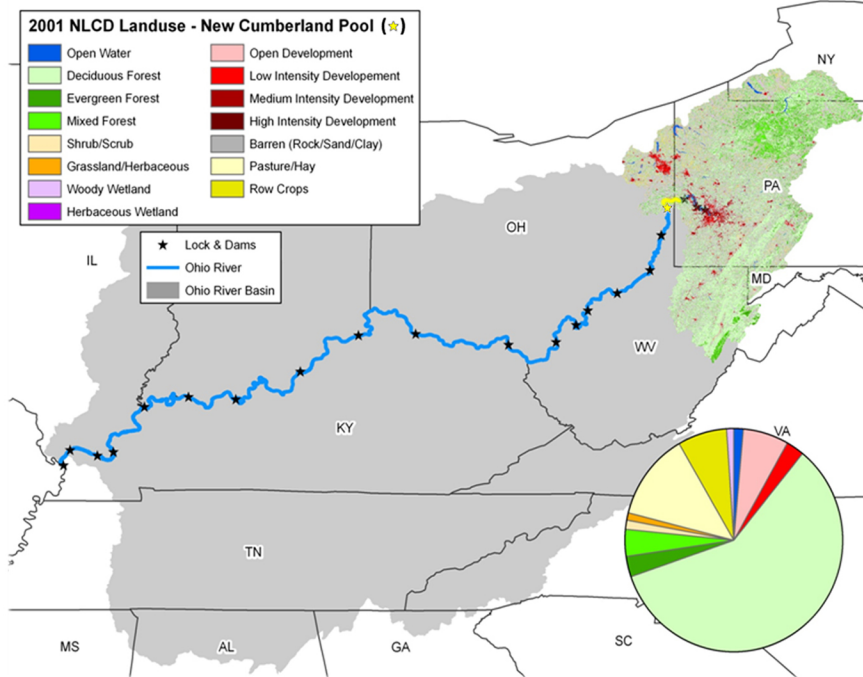
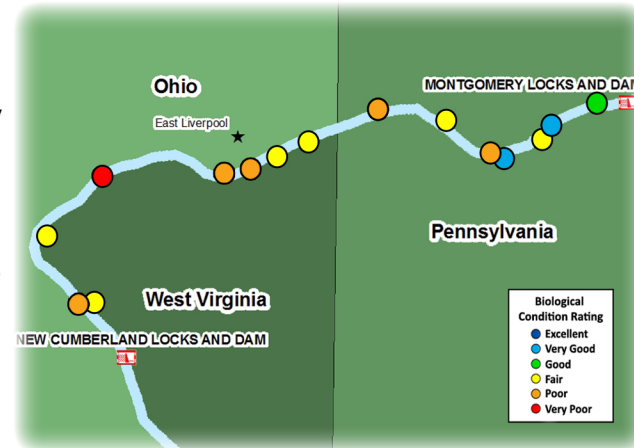
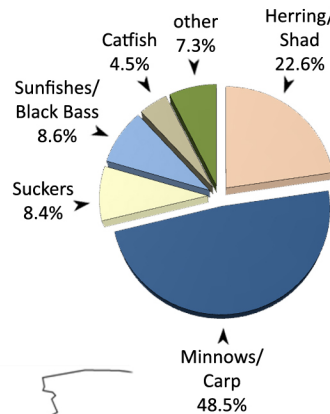


New Cumberland Pool - 2011

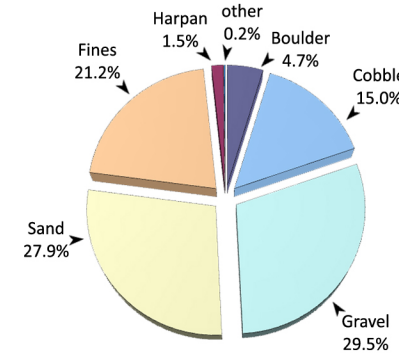
The New Cumberland pool is 22.7 miles long, extending from Montgomery Locks and Dam (ORM 31.7) to New Cumberland Locks and Dam (ORM 54.4). The pool has a gradient drop of 0.2 feet per mile, averages 1,439 feet wide and 22 feet deep. The pool flows within the state of Pennsylvania for the upper nine miles and is bordered by Ohio and West Virginia for the remaining 13.7 miles. Though the pool has few major metropolises (East Liverpool, OH), New Cumberland lies in a portion of the Ohio River heavily influenced by industry and is just 31.7 miles below the city of Pittsburgh. The New Cumberland pool receives water from two small tributaries: Little Beaver Creek and Yellow Creek. The pool's watershed is primarily forested with some agricultural land usage (crops and pasture), but also has significant urban influences. In unmodified sections of the pool the shoreline largely consists of coarse substrates.



Land-use types within the New Cumberland Pool watershed



Locations of the 15 randomly chosen electrofishing sites in New Cumberland Pool



rock bass (*Ambloplites rupestris*)

Site Performance

Site No.	River Mile	Habitat Class	ORFin Exp	ORFin Obs	mORFin Score
1	32.3	D	41.80	54.20	35.47
2	33.6	C	44.55	64.03	42.40
3	34.2	C	44.55	48.72	25.43
4	35.2	C	44.55	67.13	44.97
5	35.6	B	46.71	42.49	15.21
6	37.2	D	41.80	45.35	24.48
7	39.0	C	44.55	35.67	13.84
8	41.0	C	44.55	49.91	26.98
9	42.0	B	46.71	50.62	24.69
10	42.7	B	46.71	45.35	18.46
11	43.5	B	46.71	43.16	15.97
12	47.0	A	50.03	34.70	8.40
13	49.4	C	44.55	45.24	20.90
14	52.2	A	50.03	40.69	13.03
15	52.5	B	46.71	54.70	29.57

Average Pool mORFin Score 23.9

New Cumberland Pool - Results Overview

Sampling Results

Environmental Measures

Dominant Habitat Class: C – equal mix of coarse and fines
Notable Measures: relatively high percentage of coarse shoreline

Biological Measures

Total No. of Fish Species: 39
Average No. of Individuals: 149
Dominant Family (minus herring/shad): Minnows/Carp
Dominant Species (minus shad/shiners): golden redbreast
Threatened & Endangered Species: mooneye, silver chub (PA)
Rare Ohio River Mainstem Species: channel darter
Notable Catch: abundant game fishes (sm. bass and bluegill)

Assessment Results

Highest scoring ORFin metric (minus DELTs): % Non-natives
Lowest scoring ORFin metric: % Piscivores
Sites Above 25th percentile (i.e. mORFin Score = 20): 9
Sites Below 25th percentile (i.e. mORFin Score = 20): 6
Aquatic Life-Use Designation: Met

Overall Biological Condition Rating: Fair



yellow perch (*Perca flavescens*)

Shippingsport, PA which lies in the northern reach of New Cumberland Pool, is home to the only nuclear power plant on the mainstem

