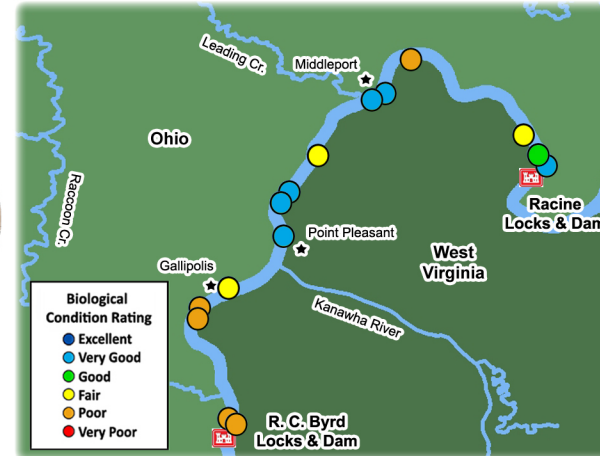
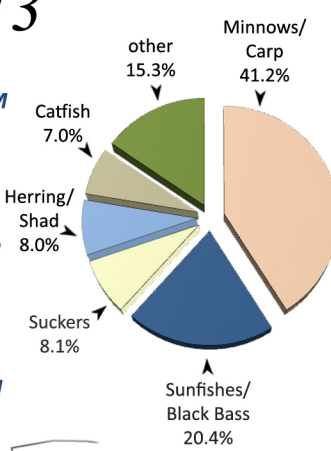
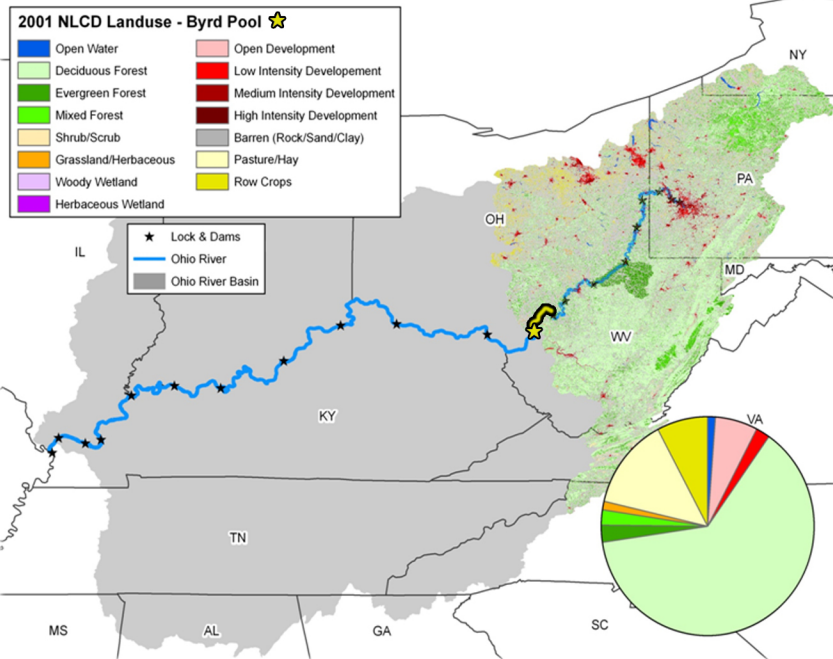
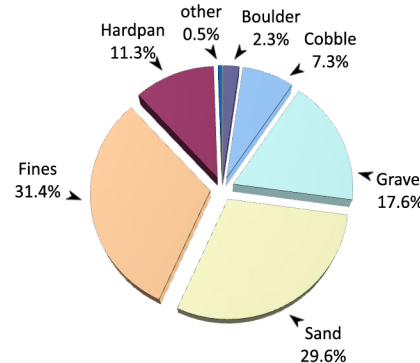


R. C. Byrd Pool - 2013

The R. C. Byrd pool is 41.7 miles long, extending from the Racine Locks and Dam (ORM 237.5) to the R.C. Byrd (formerly Gallipolis) Locks and Dam (ORM 279.2) on the downstream end. The pool has a gradient drop of 0.6 feet per mile and averages 1,154 feet wide and 26 feet deep (ORSANCO 1994). The pool is bordered by the states of West Virginia and Ohio. This pool lies in a portion of the Ohio River heavily influenced by industry with a large amount of barge activity. The Kanawha River empties into this pool at Ohio River mile-point 265.7 and has a drainage area of 12,200 square miles. R. C. Byrd pool also receives water from Leading Creek and Racoon Creek with drainage areas of 151 and 684 square miles respectively. These combined watersheds are primarily forested (65.8%), but also have a considerable amount of pasture lands (13.2%) and row crops (7.5%). Littoral zones were dominated by an invasive aquatic vegetation species (*Hydrilla*).



Locations of the 15 randomly chosen electrofishing sites in R. C. Byrd Pool



river redhorse (*Moxostoma carinatum*)

Site Performance

Site No.	River Mile	Habitat Class	ORFIn Exp	ORFIn Obs	mORFIn Score
1	238.7	C	44.55	64.54	42.8
2	239.2	C	44.55	52.95	30.8
3	240.8	B	46.71	50.13	24.1
4	249.7	D	41.80	39.90	18.1
5	252.5	C	44.55	72.29	49.3
6	253.0	C	44.55	63.21	41.7
7	258.0	E	39.59	47.85	27.6
8	260.9	C	44.55	66.87	44.8
9	261.3	D	41.80	63.79	45.5
10	263.9	D	41.80	64.35	46.0
11	268.6	E	39.59	47.29	27.0
12	270.3	D	41.80	41.16	19.4
13	270.9	D	41.80	32.03	10.5
14	278.0	E	39.59	36.05	15.0
15	278.1	C	44.55	43.81	19.5
Average Pool mORFIn Score			30.8		

R. C. Byrd Pool - Results Overview

Sampling Results

Environmental Measures

Dominant Habitat Class: C - equal mix of coarse and fines
 Notable Measures: The lowest performing sites were found downstream of the confluence of the Kanawha River

Biological Measures

Total No. of Fish Species: 33
 Average No. of Individuals: 121
 Dominant Family (minus herring/shad): Minnows/Carp
 Dominant Species (minus shad/shiners): bluegill
 Species of Concern: highfin carpsucker (WV) & river redhorse (OH)
 Rare Ohio River Mainstem Species: spottail shiner
 Notable Catch: striped bass (common in reservoirs & lower OH R.)

Assessment Results

Highest scoring ORFIn metric (minus DELTs): % Tolerants
 Lowest scoring ORFIn metric (minus GR Species): CPUE
 Sites Above 25th percentile (i.e. mORFIn Score = 20): 10
 Sites Below 25th percentile (i.e. mORFIn Score = 20): 5
 Aquatic Life-Use Designation: Met

Overall Biological Condition Rating: Good



white bass (*Morone chrysops*)

The waterfront of Pomeroy, OH
 a small river town upstream of Middleport, OH

