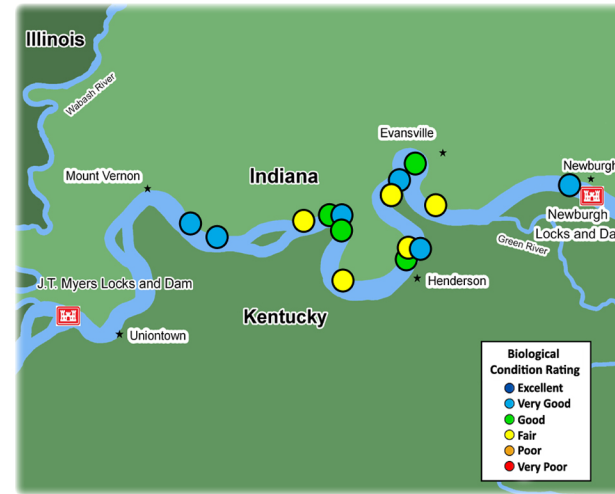
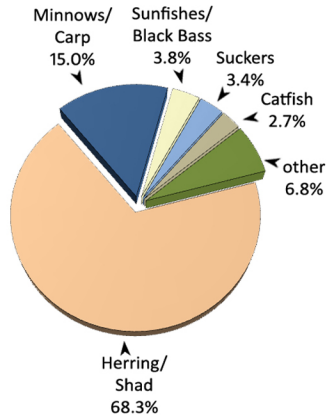
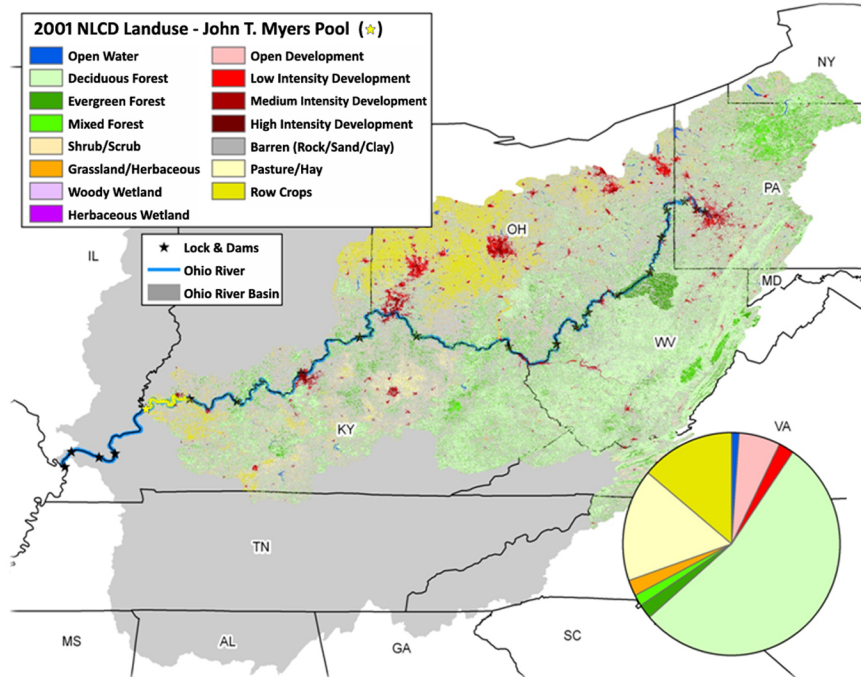
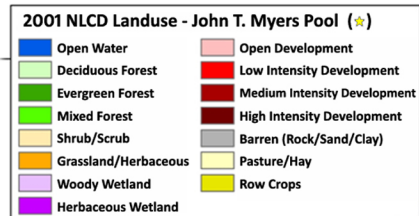


# John T. Myers Pool

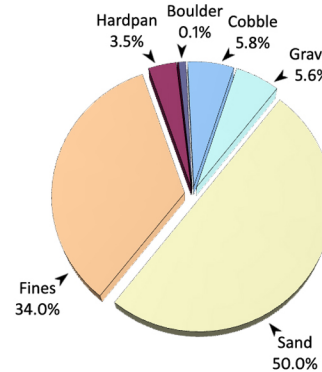
The John T. Myers pool is 69.9 miles long, extending from Newburgh Locks and Dam (ORM 776.1) to John T. Myers Locks and Dam (ORM 846.0). The pool has a gradient drop of 0.3 feet per mile and averages 2,401 feet wide and 28 feet deep. The pool is bordered by the states of Kentucky and Indiana and lies in a moderately developed portion of the river heavily influenced by agricultural practices and related industry/barge activity. The city of Evansville, IN is located downstream of the pool's largest tributary, the Green River (KY) which has a drainage area over 9,000 square miles. Backwater areas (near Uniontown) and oxbows (Hovey Lake FWA) in the pool's lower section provide habitat for uncommon Ohio River species like the bowfin. The instream habitat throughout John T. Myers pool is noticeably uniform (sand and fines) with only a few small pockets of natural rocky shorelines and woody cover.



Typical shoreline in John T. Myers Pool



Land-use types within the John T. Myers Pool watershed



blue catfish (*Ictalurus furcatus*)

## Site Performance

Site No.	River Mile	Habitat Class	ORFin Exp	ORFin Obs	mORFin Score
1	778.1	C	44.55	71.01	48.2
2	787.4	D	41.80	47.58	27.3
3	792.2	D	41.80	57.21	39.2
4	795.3	D	41.80	58.59	40.6
5	796.5	D	41.80	46.45	25.9
6	801.9	C	44.55	62.65	41.2
7	802.4	D	41.80	47.23	26.9
8	802.8	D	41.80	56.98	38.9
9	808.9	D	41.80	45.83	25.1
10	813.7	D	41.80	54.17	35.4
11	814.6	C	44.55	61.17	40.0
12	814.9	C	44.55	53.91	31.9
13	816.9	E	39.59	48.93	28.5
14	823.4	E	39.59	60.73	41.9
15	825.5	D	41.80	65.13	46.8

Average Pool mORFin Score 35.9

## John T. Myers Pool - Results Overview

### Sampling Results

#### Environmental Measures

Dominant Habitat Class: D - shallow sand/fines  
Notable Measures: woody cover present in the lower section

#### Biological Measures

Total No. of Fish Species: 44  
Average No. of Individuals: 85  
Dominant Family (*minus herring/shad*): Minnows/Carp  
Dominant Species (*minus gizzard shad*): mimic shiner  
Species of Concern: black buffalo, spottail shiner  
Rare Ohio River Mainstem Species: spottail shiner  
Notable Catch: spotted gar

### Assessment Results

Highest scoring ORFin metric: Percent Invertivores  
Lowest scoring ORFin metric: Percent Simple Lithophils  
Sites Above 25<sup>th</sup> percentile (i.e. mORFin Score = 20): 15  
Sites Below 25<sup>th</sup> percentile (i.e. mORFin Score = 20): 0  
Aquatic Life-Use Designation: Met

Overall Biological Condition Rating: Good

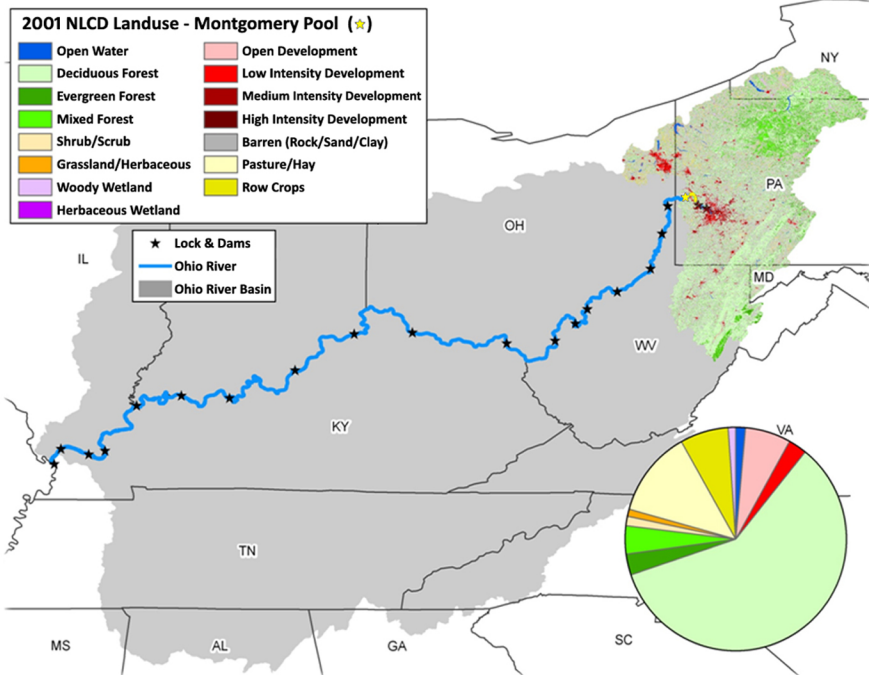


black buffalo (*Ictiobus niger*)

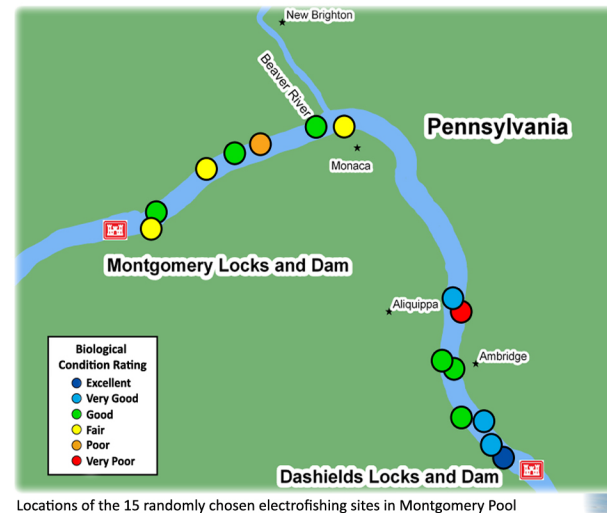
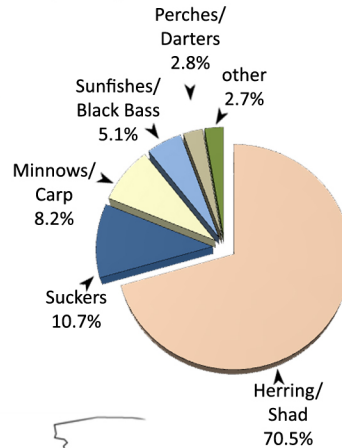


# Montgomery Pool - 2010

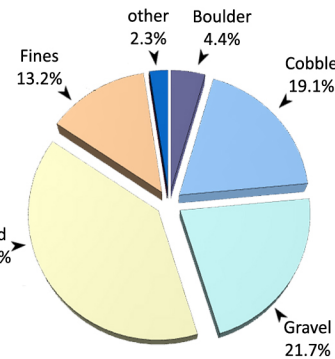
The Montgomery pool is 18.5 miles long, extending from Dashields Locks and Dam (ORM 13.2) to Montgomery Locks and Dam (ORM 31.7). The pool has a gradient drop of 0.2 feet per mile and averages 1,376 feet wide and 25 feet deep, and is contained entirely within the state of Pennsylvania. The surrounding area of this pool is best described as an urban extension of Pittsburgh. This proximity to the largest metropolitan area on the river results in a high volume of industry, barge activity, and recreational boaters. Most of the pool's shorelines are modified, to some extent, with large rocks to curb shoreline erosion. Outside of these rocky shorelines and a few pockets of aquatic vegetation, the most abundant aquatic habitat is fallen timber (e.g. trees and stumps). A major tributary to this pool, the Beaver River, is also heavily influenced by industry yet is still a valuable fishery and provides recreational access.



Land-use types within the Montgomery Pool watershed



Locations of the 15 randomly chosen electrofishing sites in Montgomery Pool



bigmouth buffalo (*Ictiobus cyprinellus*)

## Site Performance

Site No.	River Mile	Habitat Class	ORFin Exp	ORFin Obs	mORFin Score
1	13.7	B	46.71	78.78	55.3
2	14.1	B	46.71	73.12	47.8
3	14.8	D	41.80	61.53	43.4
4	15.3	B	46.71	55.45	30.5
5	16.5	C	44.55	59.09	37.7
6	16.8	B	46.71	59.46	35.1
7	18.3	B	46.71	28.76	6.1
8	18.6	C	44.55	70.83	48.0
9	25.3	D	41.80	43.43	22.1
10	25.9	B	46.71	55.69	30.7
11	27.3	B	46.71	46.33	19.6
12	27.9	C	44.55	55.76	34.0
13	28.7	C	44.55	50.13	27.3
14	30.4	C	44.55	52.98	30.8
15	30.7	C	44.55	48.03	24.5

Average Pool mORFin Score 32.9

## Montgomery Pool - Results Overview

### Sampling Results

#### Environmental Measures

Dominant Habitat Class: B – moderately coarse  
Notable Measures: relatively high amounts of rocky shorelines

#### Biological Measures

Total No. of Fish Species: 41  
Average No. of Individuals: 102  
Dominant Family (*minus herring/shad*): Suckers  
Dominant Species (*minus gizzard shad*): golden redbreast  
Threatened & Endangered Species: mooneye, silver chub  
Rare Ohio River Mainstem Species: white sucker  
Notable Catch: bigmouth buffalo (*endangered*)

### Assessment Results

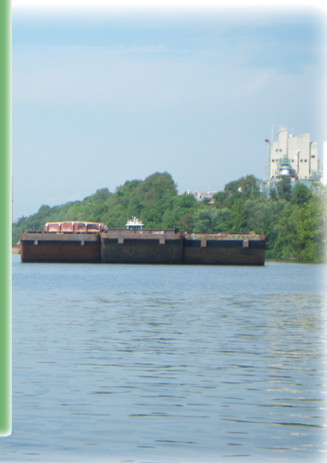
Highest scoring ORFin metric: No. of Suckers  
Lowest scoring ORFin metric: Great River species  
Sites Above 25<sup>th</sup> percentile (i.e. mORFin Score = 20): 13  
Sites Below 25<sup>th</sup> percentile (i.e. mORFin Score = 20): 2  
Aquatic Life-Use Designation: Met

Overall Biological Condition Rating: Good



white sucker (*Catostomus commersoni*)

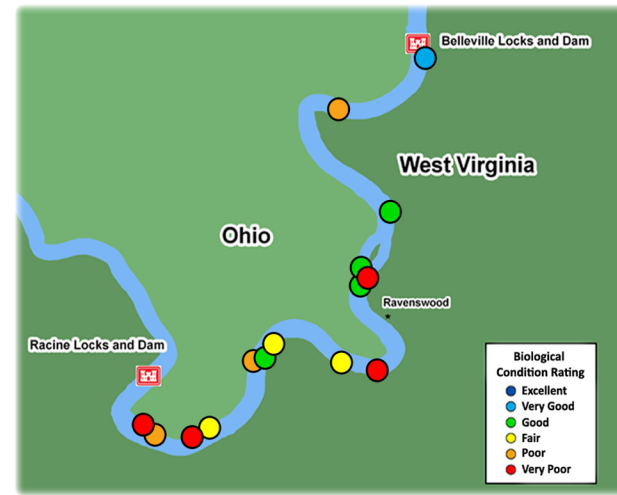
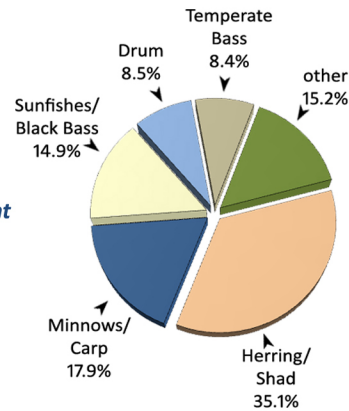
Barge traffic is very common in Montgomery Pool due to its proximity to Pittsburgh, PA





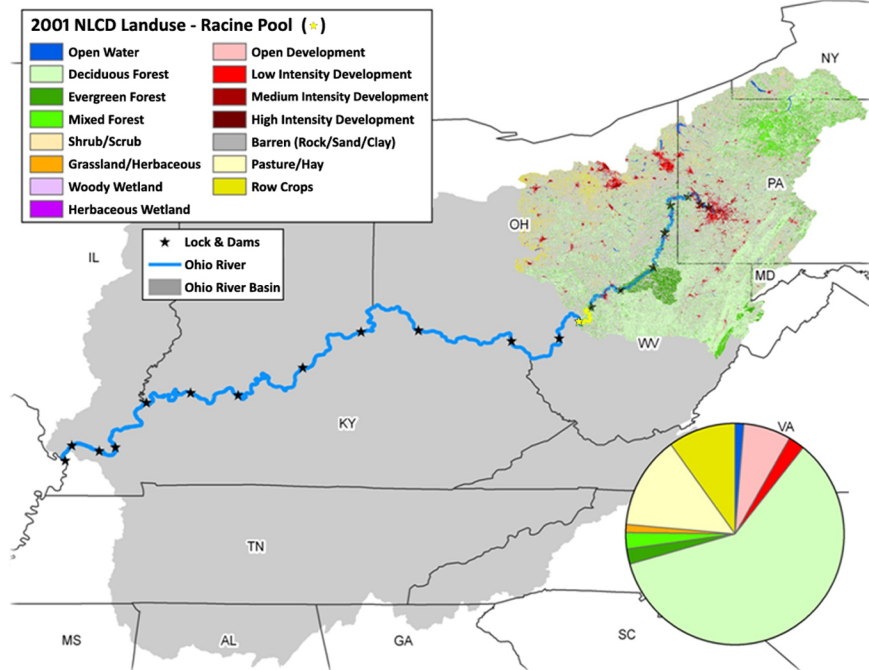
# Racine Pool - 2010

The Racine pool is 33.6 miles long, extending from Belleville Locks and Dam (ORM 203.9) to Racine Locks and Dam (ORM 237.5). The pool has a gradient drop of 0.5 feet per mile and averages 1,275 feet wide and 24 feet deep. The pool is bordered by the states of Ohio and West Virginia, and lies in a relatively undeveloped portion of the basin, with little influence of industry. Amid the naturally forested areas, the little development that is present is mostly residential. The majority of the pool shorelines are relatively shallow with a mix of fines and sand. These shoreline conditions are conducive to the growth of aquatic vegetation, which is found in large quantities throughout the pool. The Racine pool receives water from several small tributaries with drainage areas all less than 230 square miles: Shade River (OH), Shady Creek (WV), and Mill Creek (WV).

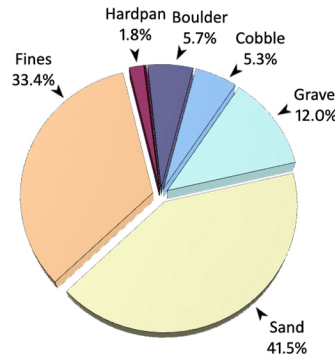


Locations of the 15 randomly chosen electrofishing sites in Racine Pool

Large expanses of submerged aquatic vegetation are common along the shallow shorelines of Racine Pool



Land-use types within the Racine Pool watershed



yellow bullhead (*Ameiurus natalis*)

## Site Performance

Site No.	River Mile	Habitat Class	ORFin Exp	ORFin Obs	mORFin Score
1	204.4	B	46.71	64.53	40.6
2	208.6	B	46.71	41.36	13.9
3	215.3	B	46.71	56.83	32.0
4	217.7	D	41.80	52.45	33.3
5	218.1	E	39.59	26.36	0.0
6	218.5	C	44.55	55.86	34.1
7	222.7	D	41.80	30.07	8.9
8	223.9	C	44.55	49.94	27.0
9	227.1	E	39.59	45.63	25.5
10	227.9	D	41.80	55.11	36.6
11	228.0	D	41.80	41.28	19.5
12	231.7	E	39.59	43.71	23.8
13	232.5	D	41.80	27.10	6.7
14	234.1	D	41.80	32.91	11.3
15	234.7	D	41.80	23.43	4.0

Average Pool mORFin Score 21.2

## Racine Pool - Results Overview

### Sampling Results

#### Environmental Measures

Dominant Habitat Class: D - shallow sand/fines  
Notable Measures: aquatic vegetation found at 100% of sites

#### Biological Measures

Total No. of Fish Species: 42  
Average No. of Individuals: 97  
Dominant Family (*minus herring/shad*): Minnows/Carp  
Dominant Species (*minus gizzard shad*): bluegill sunfish  
Threatened & Endangered: banded killifish (OH)  
Rare Ohio River Mainstem Species: yellow bullhead  
Notable Catch: spotted sucker

### Assessment Results

Highest scoring ORFin metric: Centrarchid species  
Lowest scoring ORFin metric: Great River species  
Sites Above 25<sup>th</sup> percentile (i.e. mORFin Score = 20): 8  
Sites Below 25<sup>th</sup> percentile (i.e. mORFin Score = 20): 7  
Aquatic Life-Use Designation: Met

Overall Biological Condition Rating: Fair



spotted sucker (*Minytremma melanops*)